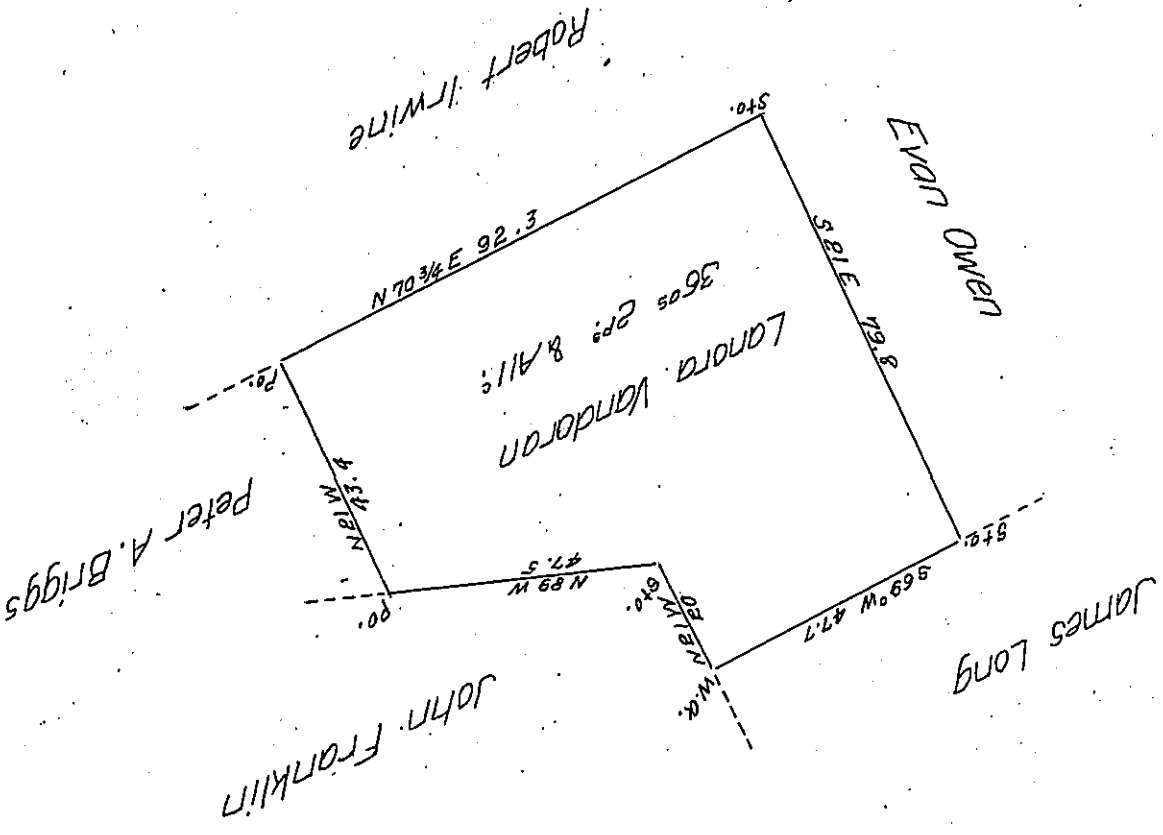


X



Draft of a tract of improved Land Situate in Nescopeck township Luzerne County, Adjoining James Long and others, Containing thirty Six Acres two perches and allowance of Six per ct. & 1/2. Surveyed the above described tract of Land the Nineteenth day of October A.D. 1840 for Lanora Vandoran, by virtue of her Warrant dated the first day of August A. D. 1840.

*To Jacob Sallade Esq. Henry Colt
Surveyor General. D.S.*

*N.B. Lanora Vandoran resides on the above.
Henry Colt.*

IN TESTIMONY that the above is a copy of the original remaining on file in the Department of Internal Affairs of Pennsylvania, made conformably to an Act of Assembly approved the 16th day of February 1833, I have hereunto set my hand and caused the Seal of said Department to be affixed at Harrisburg, this Twentieth day of April 1907

La c c d Brown
Secretary of Internal Affairs.